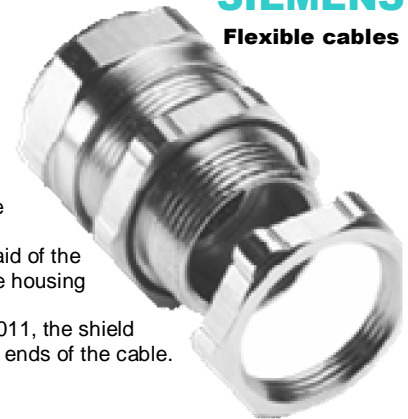


EMC CABLE GLANDS

SIEMENS
Flexible cables



EMC Cable Glands from Siemens are the perfect complement to PROTOFLEX-EMV screen cables providing efficient shield connection that meets of the requirements of EN 55011. Comprising but a few components they are quick and easy to install. Tightening the pressure nut causes the insert to press against two taper rings which, in turn, press on an endless spring washer, making its diameter taper, thus permanently bonding the screen braid of the threaded cable. The result is a low resistance connection between the cable screen and the housing of the electrical equipment via the gland body.

In order to conform with the radio interference suppression requirements set forth in EN 55011, the shield must be connected around its entire circumference and over an ample surface area at both ends of the cable.

ADVANTAGES

- rational assembly
- 360o bonding
- large sealing ranges
- IP68
- high attenuation
- sheath can still be installed into the equipment

THE EARTHING PROBLEM

Painted or power-coated housings cannot be incorporated directly in the equipotential bonding system. The contact surface must be made clean.

THE SOLUTION

The 6 teeth of the lock nut for equipotential bonding scrape into the insulating layers of paint or powder and create a vibrationresistant contact.

- no surface corrosion
- very low-ohm transition; gland/housing
- no need to clean contact surface
- increases the installed vibration-resistance through frictional connection

Cable Gland Part No.	Description/ No. of Cores x Conductor Size mm ²
577260	Protolflex EMV 4 x 1.5mm
577261	Protolflex EMV 4 x 2.5mm
577262	Protolflex EMV 4 x 4
577263	Protolflex EMV 4 x 6
577264	Protolflex EMV 4 x 10
577265	Protolflex EMV 4 x 16
577266	Protolflex EMV 4 x 25
577267	Protolflex EMV 4 x 35
577281	Protolflex EMV 4 x 50
575353	Protolflex EMV 4 x 70
575354	Protolflex EMV 4 x 95
577355	Protolflex EMV 4 x 120
575356	Protolflex EMV 4 x 150
577503	Protolflex EMV 4 x 185

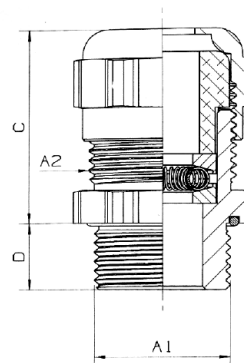


Fig. 1

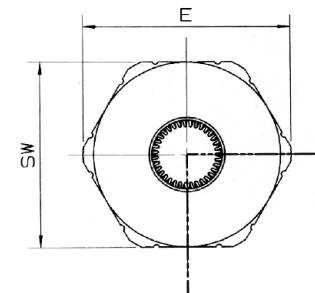


Fig. 2

Cable Gland Part No.	Lock Nut Part No.	A1	A2	Overall Thread Height C mm	Length D mm	SW x E mm
577260	577268	M20 x 1.5	M22	31	10	24 x 26.7
577261	577269	M25 x 1.5	M28	32	11	30 x 33.5
577262	577269	M25 x 1.5	M28	32	11	30 x 33.5
577263	577269	M24 x 1.5	M28	32	11	30 x 33.5
577264	577269	M25 x 1.5	M32	34	12	35 x 28.5
577265	577270	M32 x 1.5	M38	39	13	40 x 43.5
577266	277271	M40 x 1.5	M48	45	14	50 x 54.0
577267	577271	M40 x 1.5	M48	45	14	50 x 54.0
577281	577280	M50 x 1.5	M58	50	15	60 x 65.0
575353	575416	M63 x 1.5	M75	58	16	81 x 87.0
575354	575417	M63 x 1.5	M75	58	16	81 x 87.0